

# ARROWHEAD METROPOLITAN DISTRICT

CURVE TABLE

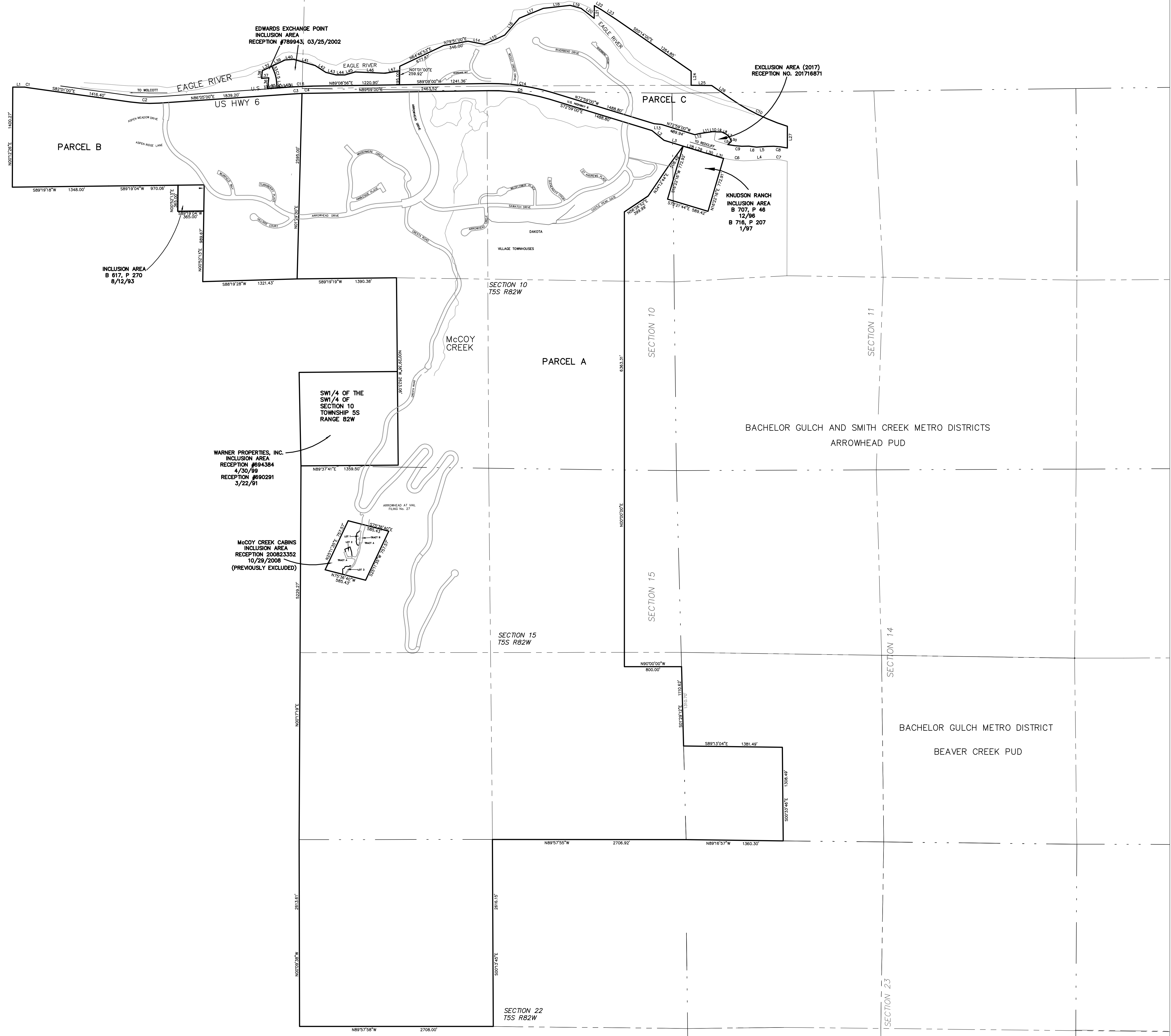
CURVE	RADIUS	LENGTH	TANGENT	CHORD	BEARING	DELTA
C1	2915.00'	75.41'	37.71'	75.40'	S81°16'32"E	01°28'56"
C2	1960.00'	407.08'	203.54'	406.35'	S87°58'00"E	11°44'00"
C3	5680.00'	160.71'	80.36'	160.70'	S86°53'38"W	01°37'16"
C4	5680.00'	142.73'	71.37'	142.76'	N88°59'48"E	01°26'23"
C5	5680.00'	877.61'	442.50'	874.26'	N81°55'00"W	17°54'00"
C6	1276.00'	380.09'	191.46'	378.68'	S84°59'00"E	17°04'00"
C7	825.00'	261.20'	131.70'	260.11'	S84°28'12"E	18°08'25"
C8	1005.00'	282.86'	142.37'	281.92'	N85°27'14"W	16°07'33"
C9	1076.00'	296.85'	149.37'	295.91'	S85°36'43"E	15°48'25"
C10	2928.28'	896.56'	451.82'	893.06'	S84°01'18"E	17°32'43"
C11	300.00'	292.13'	158.82'	280.73'	S35°30'24"W	55°47'35"
C12	300.00'	158.78'	81.30'	156.94'	S22°46'22"W	30°19'31"
C13	300.00'	439.22'	234.66'	439.16'	S33°14'08"W	09°24'00"
C14	2915.00'	908.99'	458.21'	905.31'	N81°55'00"W	17°52'00"
C15	438.50'	151.46'	76.59'	154.65'	N13°55'37"W	20°15'58"
C16	5780.00'	309.33'	154.72'	309.33'	S87°56'50"W	01°34'00"

LINE TABLE

LINE	LENGTH	BEARING
L1	166.98'	S89°41'53"E
L2	215.40'	S51°11'00"E
L3	280.95'	S72°40'00"E
L4	256.10'	N86°29'00"E
L5	148.87'	S86°29'00"W
L6	109.06'	N87°27'00"W
L7	62.59'	S41°28'33"E
L8	79.05'	S63°34'31"E
L9	87.62'	S87°48'58"E
L10	43.20'	S89°45'18"W
L11	183.85'	S81°36'50"W
L12	67.05'	S76°59'45"W
L13	103.00'	N84°18'00"W
L14	234.00'	S79°00'00"E
L15	313.00'	N65°20'00"E
L16	312.00'	N40°57'00"E
L17	362.00'	N67°28'00"E
L18	379.60'	N83°48'19"E
L19	157.00'	S74°45'00"E
L20	230.90'	S53°09'00"E
L21	177.21'	N00°20'00"E
L22	115.31'	S60°19'00"E
L23	296.22'	S56°19'00"E
L24	195.33'	S00°00'30"W
L25	288.02'	S89°05'30"E
L26	311.03'	S85°14'00"E
L27	305.21'	S00°11'11"W
L28	177.88'	S73°22'19"E
L29	100.00'	S72°13'00"E
L30	194.00'	S72°53'19"E
L31	117.46'	S73°20'23"E

LINE TABLE

LINE	LENGTH	BEARING
L32	147.51'	N64°51'25"E
L33	87.92'	S24°03'36"E
L34	90.91'	S03°42'31"E
L35	131.78'	S86°20'25"W
L36	150.15'	N06°20'55"E
L37	100.88'	S81°55'42"W
L38	107.51'	N06°31'25"E
L39	205.49'	S64°35'56"W
L40	119.00'	S86°10'56"W
L41	312.61'	N74°12'58"W
L42	178.65'	N58°54'59"W
L43	146.00'	N76°09'04"W
L44	124.40'	S80°40'56"W
L45	152.00'	S73°55'56"W
L46	418.00'	N87°19'04"W
L47	206.00'	S80°30'56"W
L48	184.03'	N86°04'56"E
L50	53.10'	S22°48'23"E
L51	65.20'	S48°48'45"E



EDWARDS EXCHANGE POINT INCLUSION AREA RECEPTION #7889431, 03/25/2002

EXCLUSION AREA (2017) RECEPTION NO. 201716871

KNUDSON RANCH INCLUSION AREA B 707, P 46 12/96 B 710, P 207 1/97

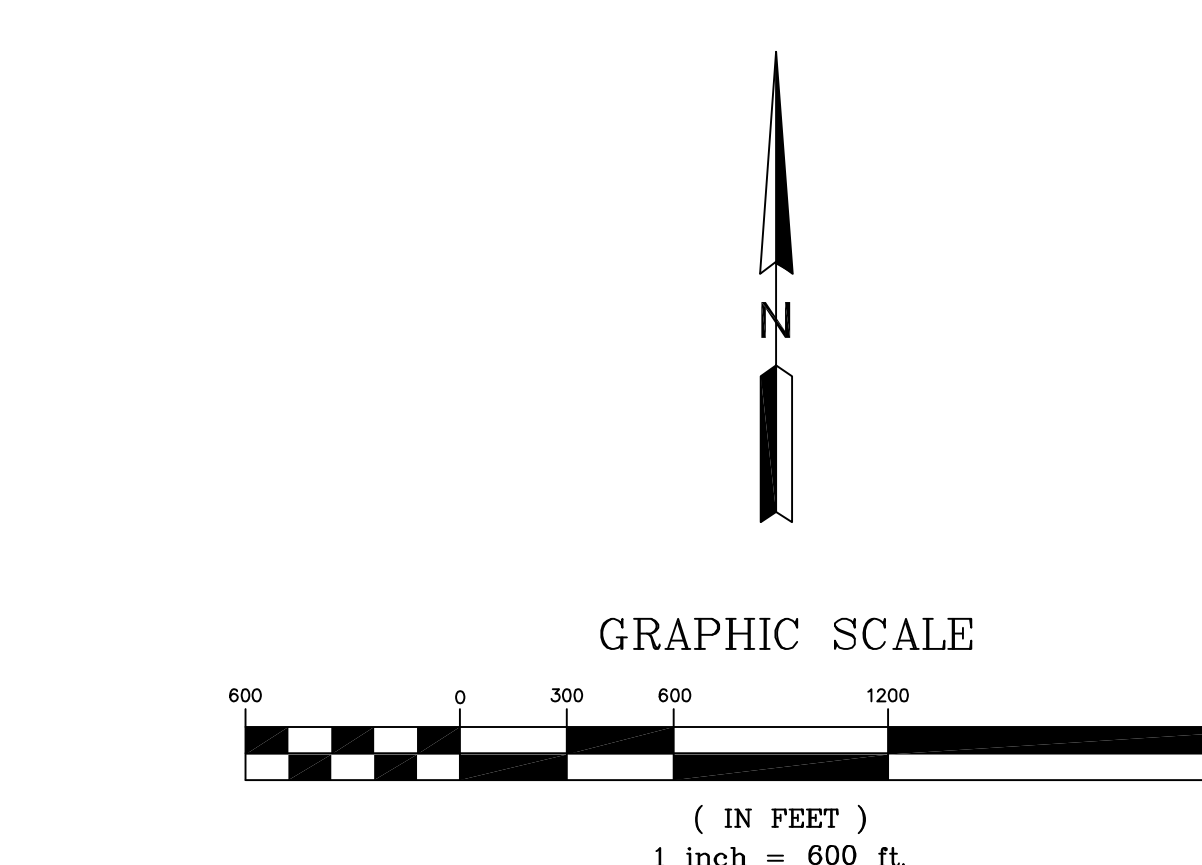
INCLUSION AREA B 817, P 270 8/12/93

SW1/4 OF THE SW1/4 OF SECTION 10 TOWNSHIP 5S RANGE 82W

WARNER PROPERTIES, INC. INCLUSION AREA RECEPTION #84384 4/30/99 RECEPTION #860291 3/22/81

McCOY CREEK CABINS INCLUSION AREA RECEPTION 200823352 10/29/2008 (PREVIOUSLY EXCLUDED)

ARROWHEAD AT VILLAGE FILMS No. 27



DATE: 11/10/2008  
 REVISED: 10/14/2014  
 REVISED: 10/03/2017

NOT A SURVEY

NOTES:  
 1. NEITHER THE PARCELS NOR THE ALIQUOT LINES DEPICTED ON THIS MAP ARE REPRESENTATIVE OF A FIELD SURVEY BY ALPINE ENGINEERING.  
 2. THIS MAP IS NOT A LAND SURVEY AND IS NOT TO BE RELIED UPON FOR THE ESTABLISHMENT OF PROPERTY BOUNDARIES.

10/03/2017  
 DATE

S:\01-MetroDistricts\A\MO\dwg\Arrowhead-2014.dwg (10/3/2017 11:20:46 AM) Lee